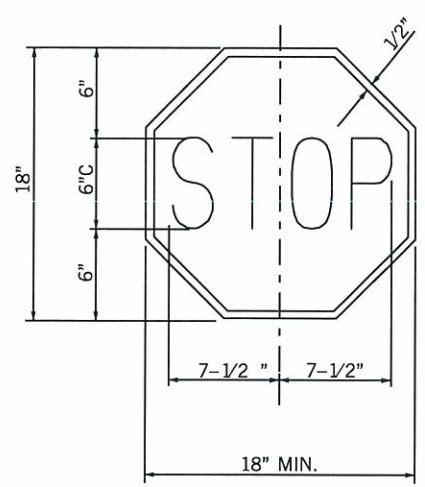
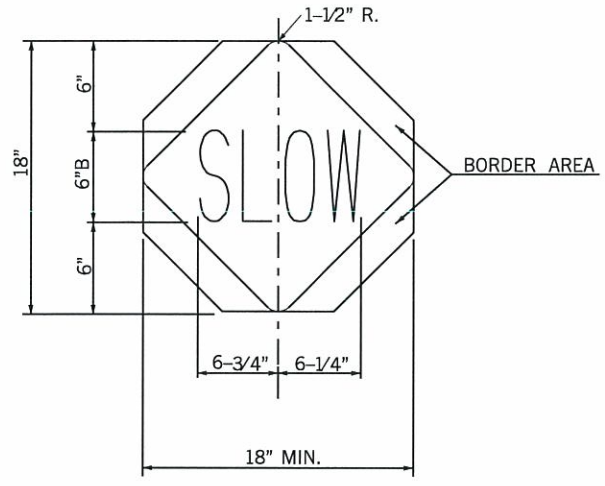


DESCRIPTION	REVISIONS	DATE

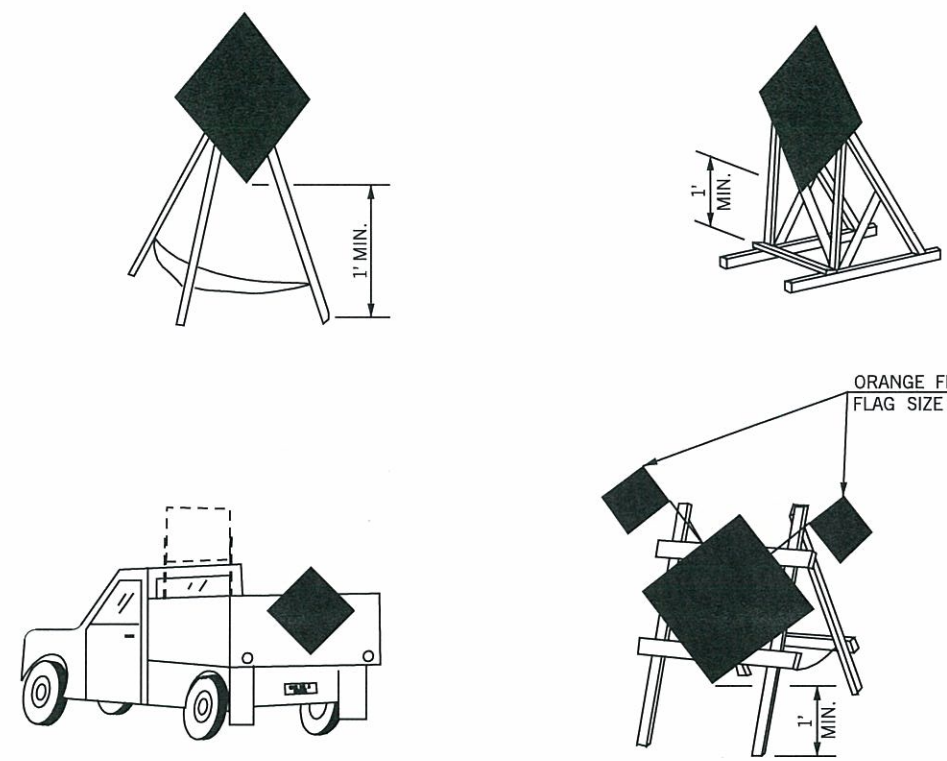


STOP:
LEGEND AND BORDER: WHITE (REFLECTORIZED)
BACKGROUND: RED (REFLECTORIZED)



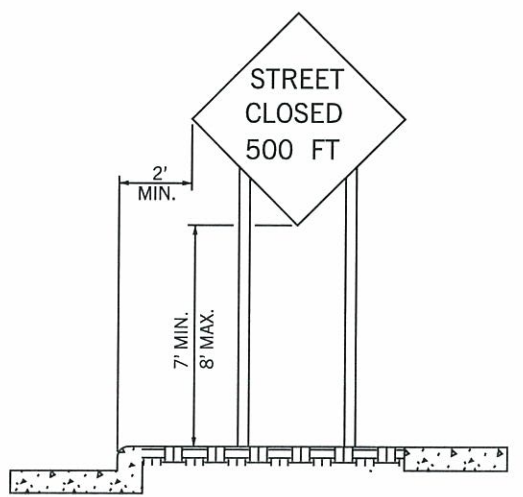
SLOW:
LEGEND AND BORDER AREA: BLACK (NON-REFLECTORIZED)
BACKGROUND: ORANGE (REFLECTORIZED)

STOP-SLOW PADDLE

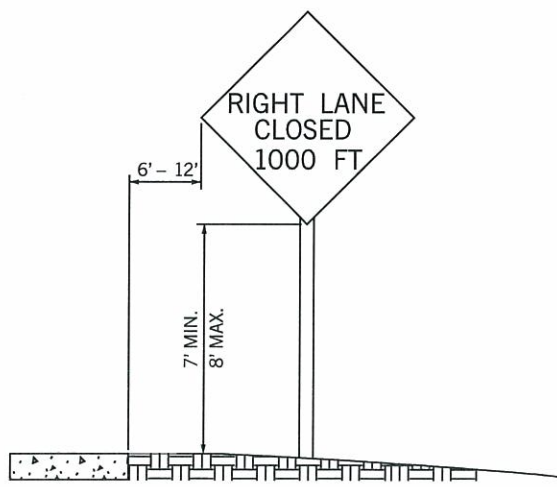


PORTABLE AND TEMPORARY MOUNTINGS
METHODS OF MOUNTING SIGNS OTHER THAN ON POSTS

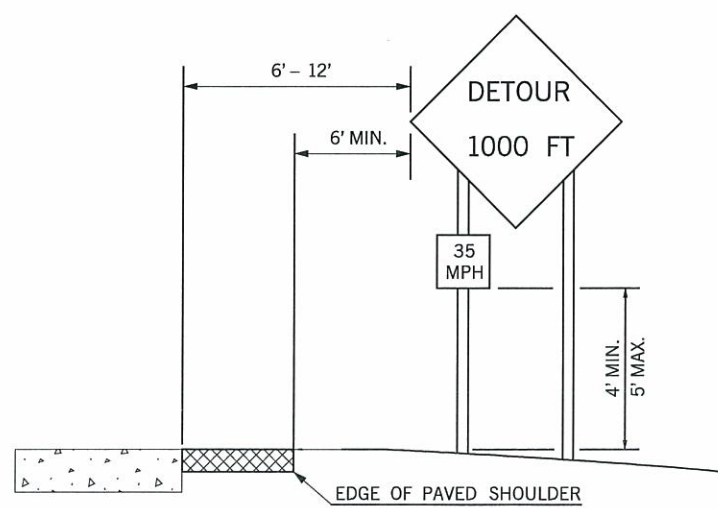
NOTE:
THE BOTTOM OF SIGNS MOUNTED ON BARRICADES OR TEMPORARY SUPPORTS SHALL NOT BE LESS THAN 1 FOOT ABOVE THE TRAVELED WAY.



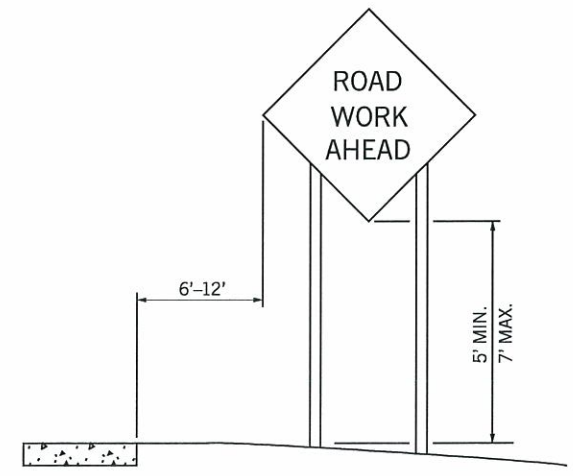
URBAN DISTRICT
(WITH CURB)



URBAN DISTRICT
(WITHOUT CURB)

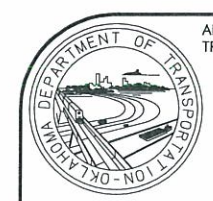


RURAL DISTRICT WITH
ADVISORY SPEED PLATE



RURAL DISTRICT

HEIGHT AND LATERAL LOCATIONS OF SIGNS - TYPICAL INSTALLATIONS



APPROVED BY
TRAFFIC ENGINEER: *Charles Smith* DATE: 5/23/10
TRAFFIC STANDARD

TRAFFIC CONTROL STANDARD
TYPICAL SIGN INSTALLATION

TRFPC36 M:\2009_Standards_TC\505.dgn 8:16:51 AM 6/2/2010 d:\usr2\frb\leroyh.pen R:\TRAF_PLOT\bw.tbl